

For Lease

Storage



## Bridge House Farm

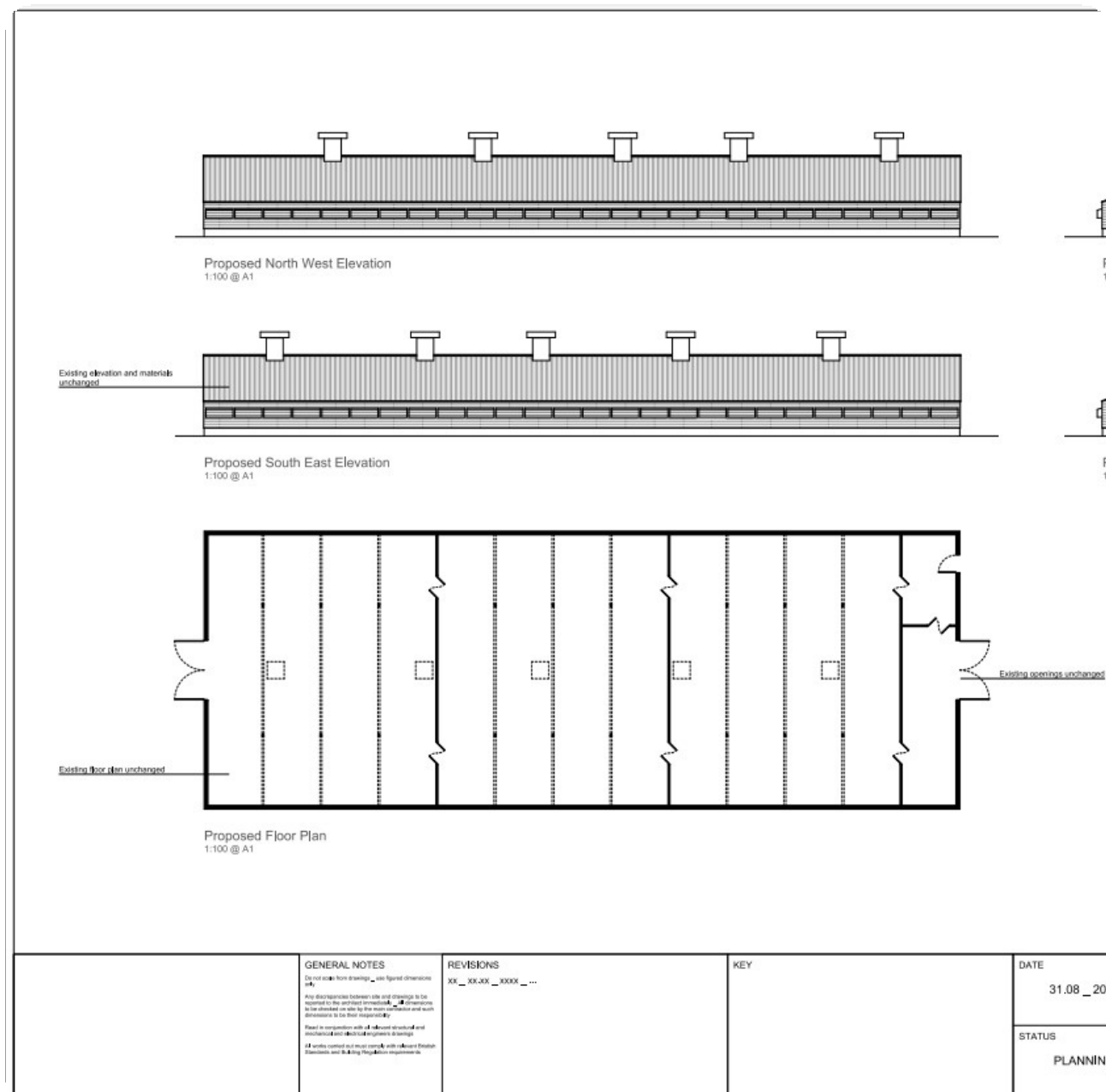
Murcott, Long Buckby, Northampton NN6 7QR

**BROMWICH**  
**ARDY**  
024 7630 8900  
[www.bromwichhardy.com](http://www.bromwichhardy.com)

6,000 - 15,750 Sq Ft  
£27,000 - £43,875 Per Annum

## Key Features

- Flexible and competitive lease terms are available
- Two Units
- Well located near to excellent road network
- Three phase power, lighting, access to WCs and water, concrete floor, parking
- Cost effective
- £4.5 per sq ft
- LED Lighting
- 5G signal on-site



Bridge House Farm, Murcott, Long Buckby,  
Northampton, Northamptonshire, NN6 7QR





## Location

Bridge House Farm benefits easy access to an excellent road network being located within 2 miles of the A5 and the M1J 16/18. Crick is located approximately 2 miles north west, Daventry is located approximately 5 miles north east and Northampton is 10 miles south east.

## Description

Bridge House Farm is located in Murcott on the edge of the village of Long Buckby in Northamptonshire.

## Accommodation

Area	Sq Ft	Sq M
R3 Part 2	2,810	261.05
B2	9,600	891.84
R3 Part 1	3,290	305.64
R1	9,750	905.78
Referbished Barn	6,000	557.4
<b>Total</b>	<b>15,750</b>	<b>1,463.18</b>

## Tenure

Available by way of a new lease direct with the Landlord on terms to be agreed.

## EPC

The property is exempt from EPC requirements.

**Bridge House Farm, Murcott, Long Buckby,  
Northampton, Northamptonshire, NN6 7QR**

With over 250 years  
of combined  
experience, trust  
Bromwich Hardy to  
safeguard your  
commercial property.



### Service Charge

A service charge is not payable.

### Legal Costs

A contribution of £175 towards Landlords legal fees will be required.

### Viewing

Viewing is strictly by appointment through the sole agent.



### Caine Gilchrist

Contact us with any queries about the property or to book a viewing

02476 308 900

07806 767 073

[caine.gilchrist@bromwichhardy.com](mailto:caine.gilchrist@bromwichhardy.com)



Bridge House Farm, Murcott, Long Buckby,  
Northampton, Northamptonshire, NN6 7QR

02476 308900 [office@bromwichhardy.com](mailto:office@bromwichhardy.com) [www.bromwichhardy.com](http://www.bromwichhardy.com)